

Axial fans, VA series For Special Applications

Axial fans fall into the following categories:
VA 9/2, VA 12/2, VA 12/2K, VA 14/2, VA 16/2.

Designed for:

- cooling of electronic control panels
- ventilation of electrical panels
- installation in electronic devices, appliance construction and automation
- cooling of welding machines and plasm cutting machines
- installation in cooling and ventilation systems and air-conditioning devices
- installation in household air heaters and heat exchangers.

All fans of this type have built-in single-phase electric motors with shielded poles and a short-circuited rotor with double capsulated ball bearings. The fan is square in shape with internally located fins to which the stator is attached.

The VA series axial fans are suitable to be fitted to apertures and air conduits with $\varnothing 90$, $\varnothing 100$, $\varnothing 120$, $\varnothing 135$ and $\varnothing 150$.

They can be produced with supply voltage 220V, 115V, 36V or 24V, at frequency of 50Hz or 60Hz.

Isolation class: H - 180°C or L - 200°C.

Protection degree: IP 44.

Operating conditions:

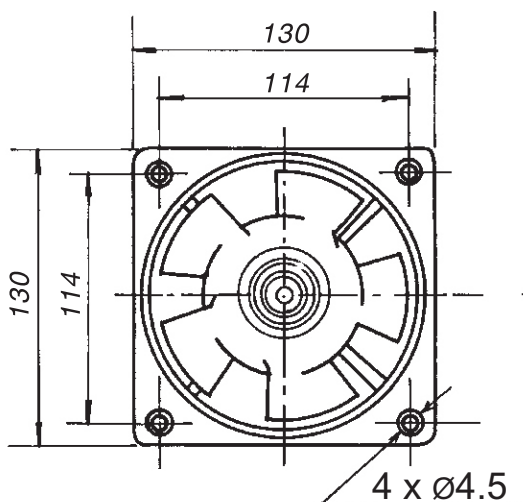
The fans are designed to operate under normal climatic conditions where the ambient temperature can vary from -5°C up to +60°C and a relative humidity from 40% to 98% at 30°C.

Upon clients' requests the fans can be manufactured to operate at higher temperatures, in tropical or coastal climatic zones.

All fans from the VA Series can be produced to resist temperatures up to 150°C.



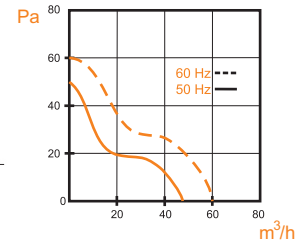
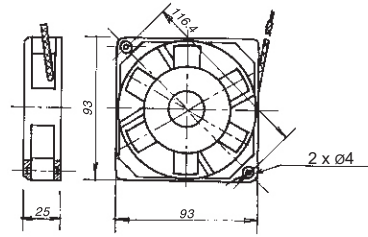
The double capsulated ball bearings guarantee 30,000 hours of flawless operation.



Technical specifications

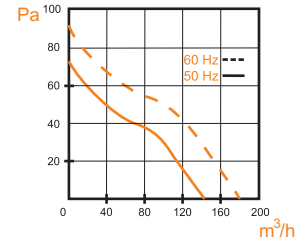
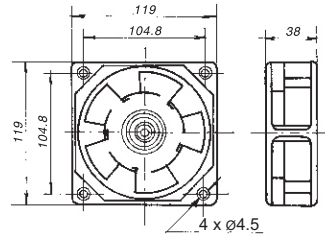
VA 9/2

Supply voltage	Rotational speed	Maximum flow rate	Maximum static pressure	For maximum flow rate		Weight
				Consumed power	Consumed current	
Hz / V	min ⁻¹	m ³ /h	Pa	W	A	kg
50 / 220	2500	60	50	16	0,095	0,4
50 / 115	2500	60	50	15	0,178	0,4
60 / 220	3000	70	60	14	0,090	0,4



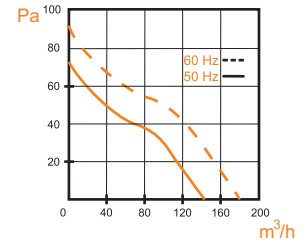
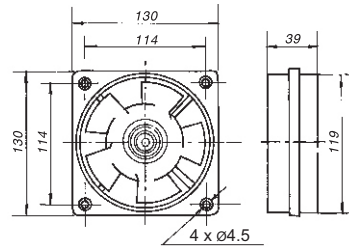
VA 12/2

Supply voltage	Rotational speed	Maximum flow rate	Maximum static pressure	For maximum flow rate		Weight
				Consumed power	Consumed current	
Hz / V	min ⁻¹	m ³ /h	Pa	W	A	kg
50 / 220	2650	150	75	18	0,125	0,8
50 / 115	2650	150	75	17	0,234	0,8
60 / 220	3200	180	90	16	0,115	0,8



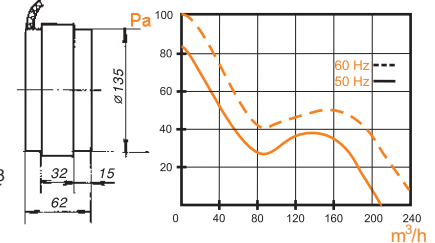
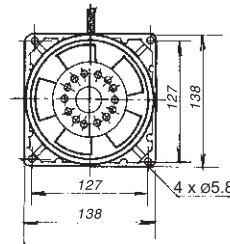
VA 12/2K

Supply voltage	Rotational speed	Maximum flow rate	Maximum static pressure	For maximum flow rate		Weight
				Consumed power	Consumed current	
Hz / V	min ⁻¹	m ³ /h	Pa	W	A	kg
50 / 220	2650	150	75	18	0,125	0,525
50 / 115	2650	150	75	17	0,234	0,525
60 / 220	3200	180	90	16	0,115	0,525



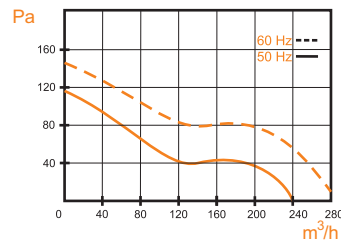
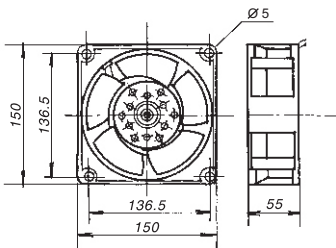
VA 14/2

Supply voltage	Rotational speed	Maximum flow rate	Maximum static pressure	For maximum flow rate		Weight
				Consumed power	Consumed current	
Hz / V	min ⁻¹	m ³ /h	Pa	W	A	kg
50 / 220	2650	205	85	42	0,34	1,4
50 / 115	2650	205	85	42	0,68	1,4
60 / 220	3200	250	98	38	0,32	1,4




VA 16/2

Supply voltage	Rotational speed	Maximum flow rate	Maximum static pressure	For maximum flow rate		Weight
				Consumed power	Consumed current	
Hz / V	min ⁻¹	m ³ /h	Pa	W	A	kg
50 / 220	2650	240	110	46	0,385	1,2
50 / 115	2650	240	110	45	0,721	1,2
60 / 220	3200	290	130	40	0,385	1,2



Contacts

web: www.mmotors-bg.com



“KOZLODUY Nuclear Power Plant” PLC

Tel.: (+359 973) 7 21 00, 7 28 30; Fax: (+359 973) 23 39
e-mail: info@kznpp.org web: www.kznpp.org

REFERENCE

FOR “MMOTORS” JSC PRODUCTION, ETROPOLE, BG

Nuclear Power Plant Kozloduy NPP PLC is pleased to refer to our exclusive supplier “MMOTORS” JSC of VA Series extractor fans.

This reference is in assurance that MMOTORS VA series extractor fans have passed all the nuclear plant operation and quality requirements for reliability and safe operation. The VA series fans are installed in crucial safety electronic control and electrical equipment devices of the nuclear plant.

For more than 12 years all business contracts have always been completed with due quality and deadline's accuracy.

‘KOZLODUY NPP’ PLC therefore, highly recommends “MMOTORS” JSC as an exceptionally tolerant and loyal partner.

This reference is issued to “MMOTORS” JSC, Etropole to promote the company for participation in different competitions and sales auctions, and with no further obligations on our behalf.

Director of produce: 
Kiril Nikolov
АОЕЛ КОЗЛОДУЙ ЕАД
гр. Козлодуй

Kozloduy
28.04.2005